

COMPANY\1999 JOBS\99-044 AHTD\WHITERIVER\JOB 110395\DRN71-72alt1 ACAD SCALE: 1/4"=1'-0"

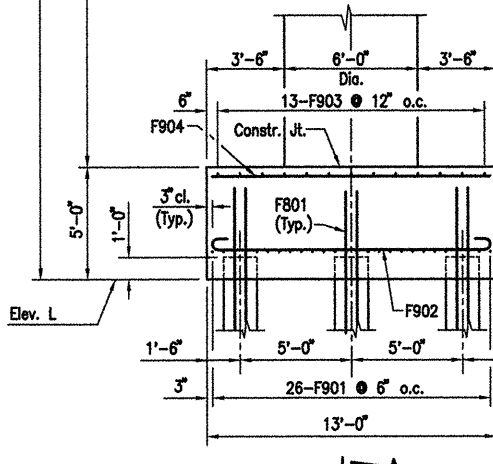
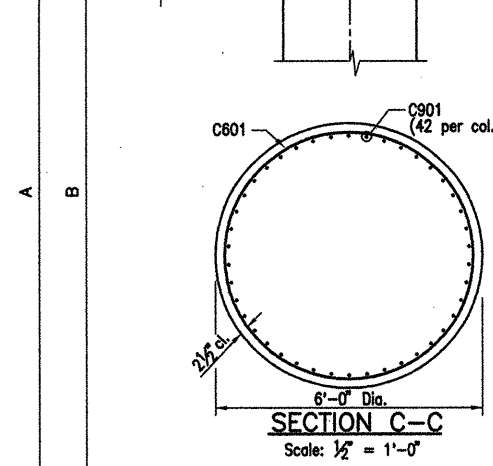
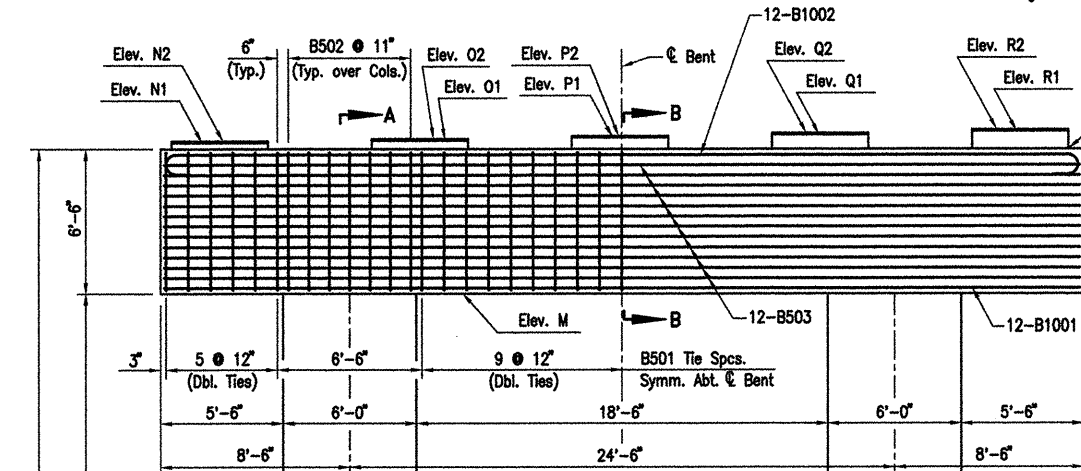
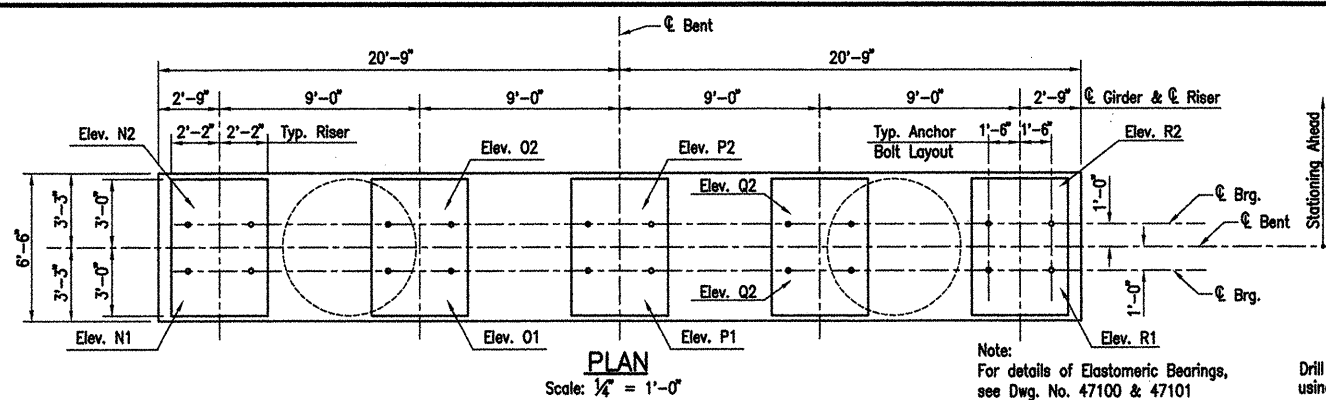
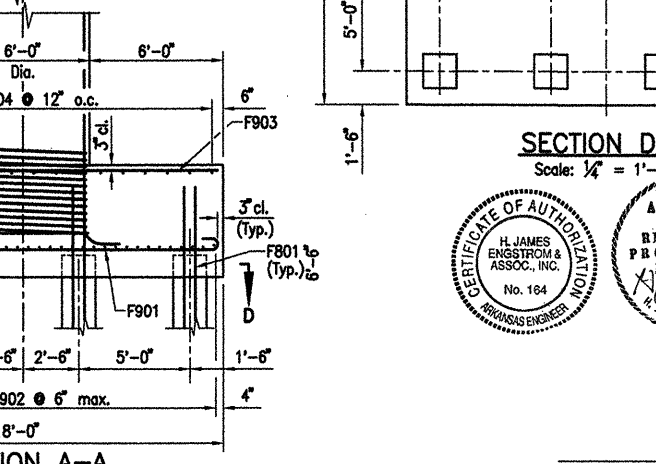
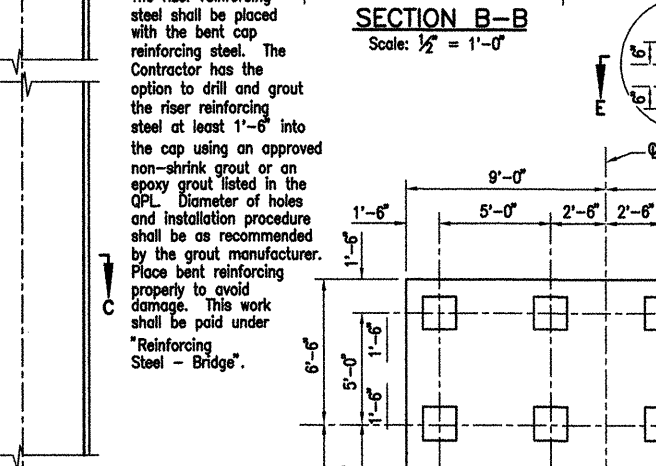
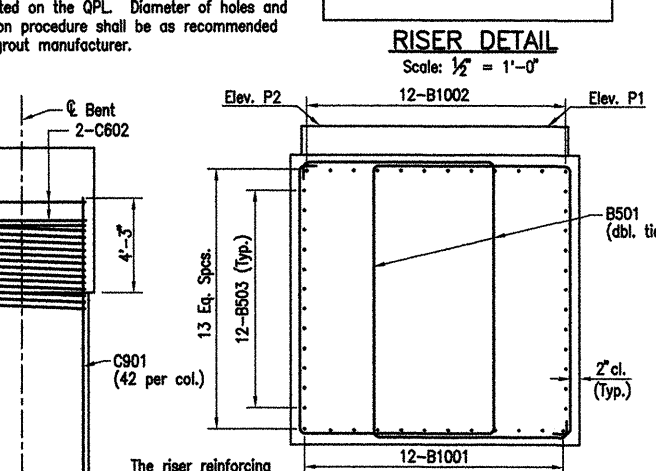
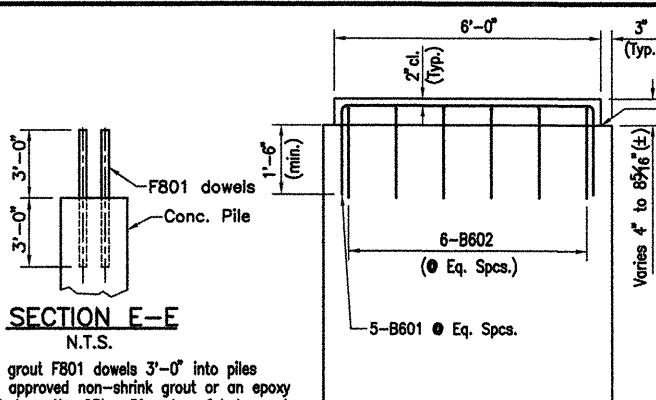
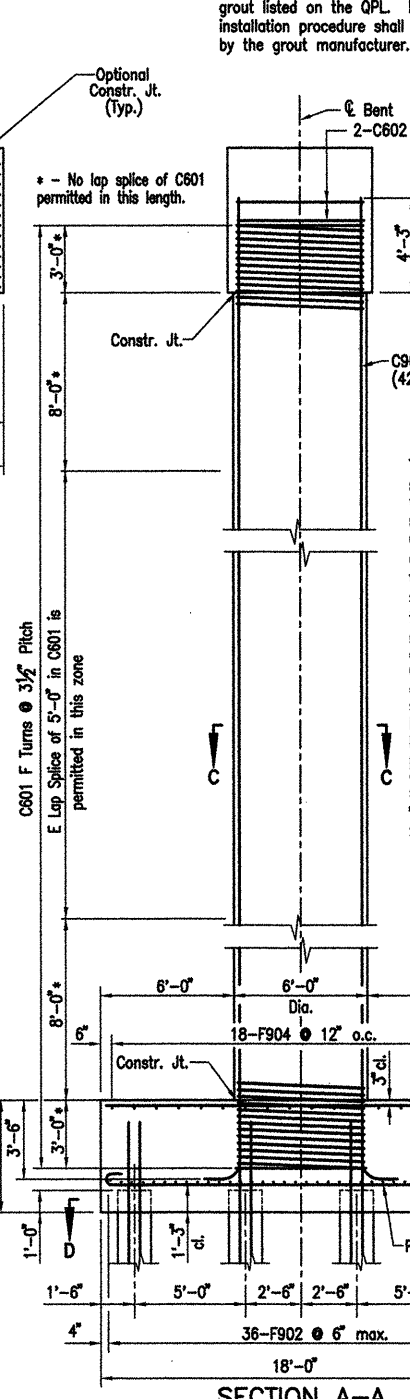


TABLE OF VARIABLES

Variable	Bent No.	70	71
A	59'-6"	59'-6"	
B	48'-0"	48'-0"	
C	57'-2"	57'-1"	
D	55'-10"	55'-9"	
E	32'-0"	32'-0"	
F	186	186	
G	3282'-1"	3282'-1"	
Elev. L	152.77	152.73	
Elev. M	205.88	205.76	
Elev. N1	212.64	212.57	
Elev. O1	212.82	212.75	
Elev. P1	213.00	212.93	
Elev. Q1	213.06	212.82	
Elev. R1	213.12	212.70	
Elev. N2	212.64	212.57	
Elev. O2	212.82	212.75	
Elev. P2	213.00	212.93	
Elev. Q2	213.05	212.81	
Elev. R2	213.11	212.69	

ELEVATION
Scale: 1/4" = 1'-0"
Looking Forward



DATE REVISED	DATE FILMED	DATE REVISED	DATE FILMED	FED. ROAD NO.	STATE	FED. AID PROJ. NO.	SHEET NO.	TOTAL SHEETS
				06830	ARK.	110395	48	203
				JOB NO.	BENTS		47046	

BAR LIST-PER BENT									
Mark	No.	Req'd	Length	'A'	'B'	P.D.	Bending Diagrams		
							Dimensions are out to out of bars.		
B501	62	22'-4"	4'-8"	6'-2"	2 1/2"		A		
B502	14	18'-3 1/2"	6'-2"	6'-2"	2 1/2"		A		
B503	24	41'-2"					A		
B601	25	9'-4"	5'-8"	2'-0"	4 1/2"		A		
B602	30	7'-8"	4'-0"	2'-0"	4 1/2"		A		
B1001	12	41'-2"					A		
B1002	12	44'-0"	41'-2"	11 1/2"	10"		A		
C601	2	G					A		
C602	4	19'-2 1/2"					A		
C901	84	C	D	1'-7"	9"		A		
F801	96	6'-0"					A		
F901	52	20'-0"	17'-6"	10"	9"		A		
F902	72	15'-0"	12'-6"	10"	9"		A		
F903	26	17'-6"					A		
F904	36	12'-6"					A		

- NOTES:
- All concrete shall be Class "S". All exposed corners to be chamfered 3/4" unless otherwise noted. All concrete shall be poured in the dry.
 - All reinforcing steel shall conform to AASHTO M31 or M53, Gr.60.
 - If anchor bolts are drilled into cap, top reinforcing bars shall be properly placed to avoid damage.
 - For additional information, see Layout.
 - Contractor has the option of placing a 6'-0" lap splice in the vertical leg of C901 bars. The splice shall be in the middle half of the column height. This shall be included in "Reinforcing Steel - Bridge".

- NOTES FOR SPIRAL REINFORCING
- Ends of spirals in footing and cap shall have 1 1/2 turns and terminate with a 135° hook and a 24" tail as shown in Bar List.
 - Spiral reinforcement at splices of bars in the length designated as permissible for lap splices shall be terminated by a 135° hook with a 10" tail hooked around a vertical bar.
 - Spiral reinforcement shall be plain round or deformed steel bars meeting the requirements of AASHTO M31 or M53 (Grade 60) or shall be cold drawn wire meeting the requirements of AASHTO M32 or M225 (Grade 70) with a minimum diameter of 0.75".
 - Spiral reinforcement shall be paid for at the contract unit price bid per pound for "Reinforcing Steel - Bridge (Grade 60)". No additional payment shall be made for spacers, splices or bracing needed for assembly, shipping, handling or erecting.
 - Lapped splices in spirals shall be lapped 80 bar diameters minimum.
 - Adjust spiral pitch as needed to accommodate footing or cap bars.

ALTERNATE NO. 1

DETAILS OF BENTS - WHITE RIVER
BENTS 70 - 71

WHITE RIVER STR. & APPRS.
(CLARENDON) (PH III) (F)
MONROE COUNTY

ROUTE 79 SEC. 13
LITTLE ROCK, ARK.

ARIZONA STATE HIGHWAY COMMISSION

Engstrom & Modjeski and Masters, Inc.

DRAWN BY: CJA/JDB DATE: Sep. 10 FILENAME: b1103951_b15
CHECKED BY: FS DATE: Nov. 01 SCALE: 1/4"=1'-0"
DESIGNED BY: BMH DATE: Nov. 01
BRIDGE NO. 06830 DRAWING NO. 47046